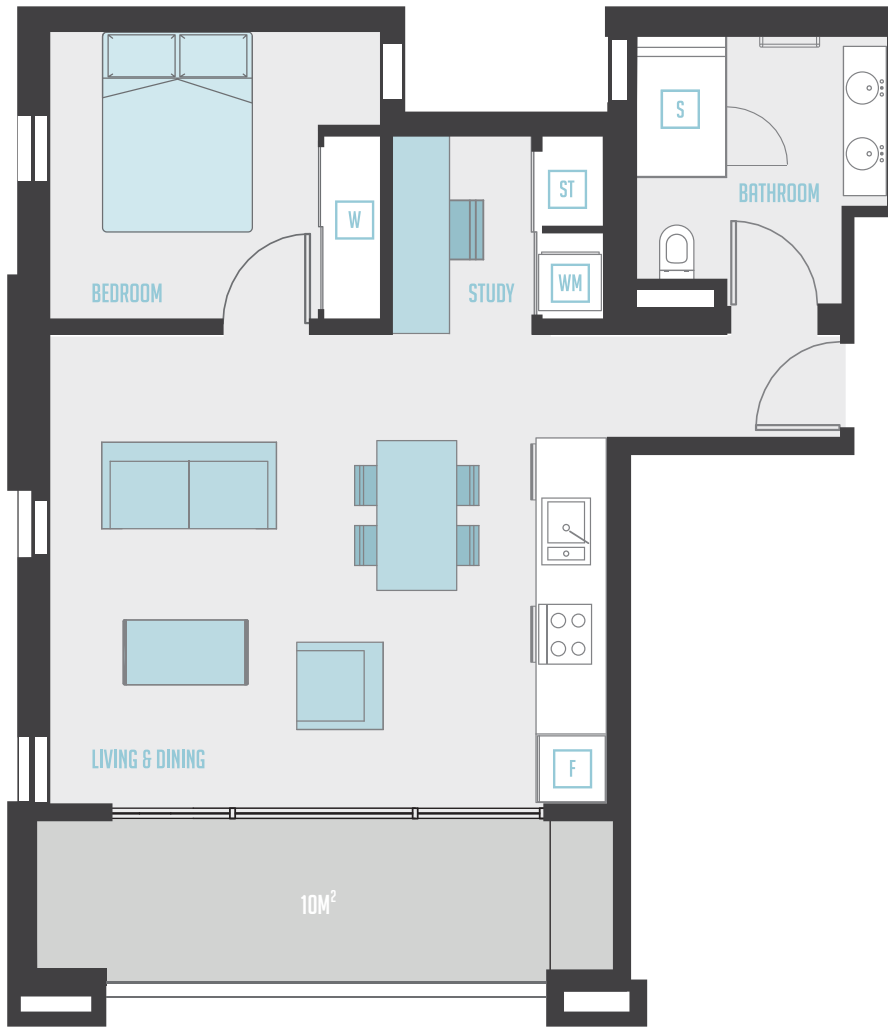




LIBRARY 27

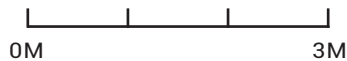
A1 / 1 BEDROOM + STUDY



0800 55 73 77 / LIBRARY27.CO.NZ

- WM WASHING MACHINE
- S SHOWER
- ST STORAGE
- F FRIDGE
- W WARDROBE
- BALCONY

INTERNAL AREA 55M²
 BALCONY AREA 10M²
 TOTAL 65M²



TYPICAL LOWER & UPPER LEVEL

Disclaimer: This floor plan has been prepared for marketing purposes only. All descriptions, dimensions, depictions and other details in this floor plan may not be to scale and may vary to the property as built. No third party has any authority to make or give any representation or warranty in relation to the property. Your attention is drawn to the special conditions of the contract for sale.

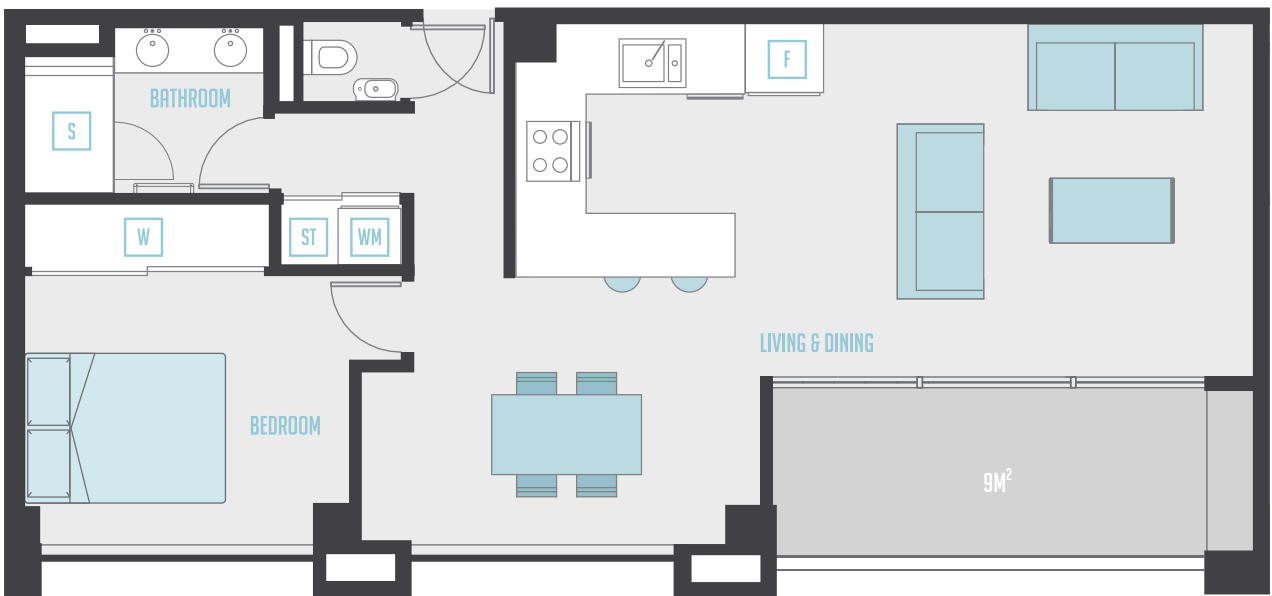
CBRE

CBRE (AGENCY) LTD LICENSED REAL ESTATE AGENT (REAA 2008)



LIBRARY 27

A2 / 1 BEDROOM



0800 55 73 77 / LIBRARY27.CO.NZ



- WM WASHING MACHINE
- S SHOWER
- ST STORAGE
- F FRIDGE
- W WARDROBE
- BALCONY

INTERNAL AREA 59M²
 BALCONY AREA 9M²
 TOTAL 68M²



TYPICAL LOWER & UPPER LEVEL

Disclaimer: This floor plan has been prepared for marketing purposes only. All descriptions, dimensions, depictions and other details in this floor plan may not be to scale and may vary to the property as built. No third party has any authority to make or give any representation or warranty in relation to the property. Your attention is drawn to the special conditions of the contract for sale.

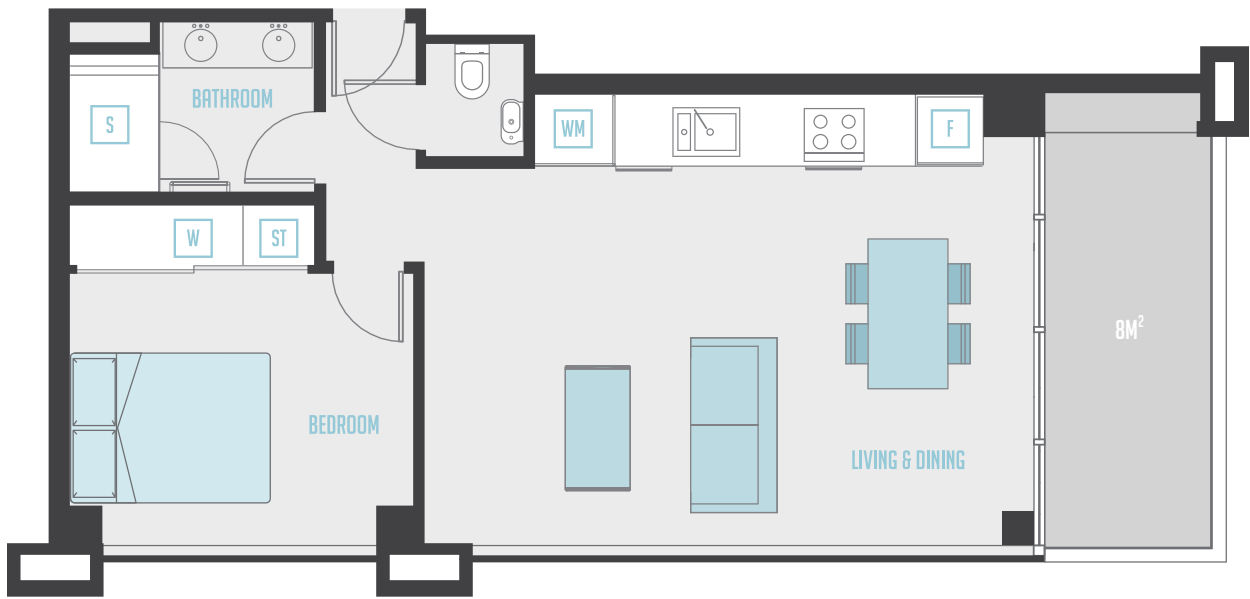
CBRE

CBRE (AGENCY) LTD LICENSED REAL ESTATE AGENT (REAA 2008)



LIBRARY 27

A3 / 1 BEDROOM



0800 55 73 77 / LIBRARY27.CO.NZ



- WM WASHING MACHINE
- S SHOWER
- ST STORAGE
- F FRIDGE
- W WARDROBE
- BALCONY

INTERNAL AREA 50M²
 BALCONY AREA 8M²
 TOTAL 58M²



TYPICAL LOWER LEVEL

Disclaimer: This floor plan has been prepared for marketing purposes only. All descriptions, dimensions, depictions and other details in this floor plan may not be to scale and may vary to the property as built. No third party has any authority to make or give any representation or warranty in relation to the property. Your attention is drawn to the special conditions of the contract for sale.

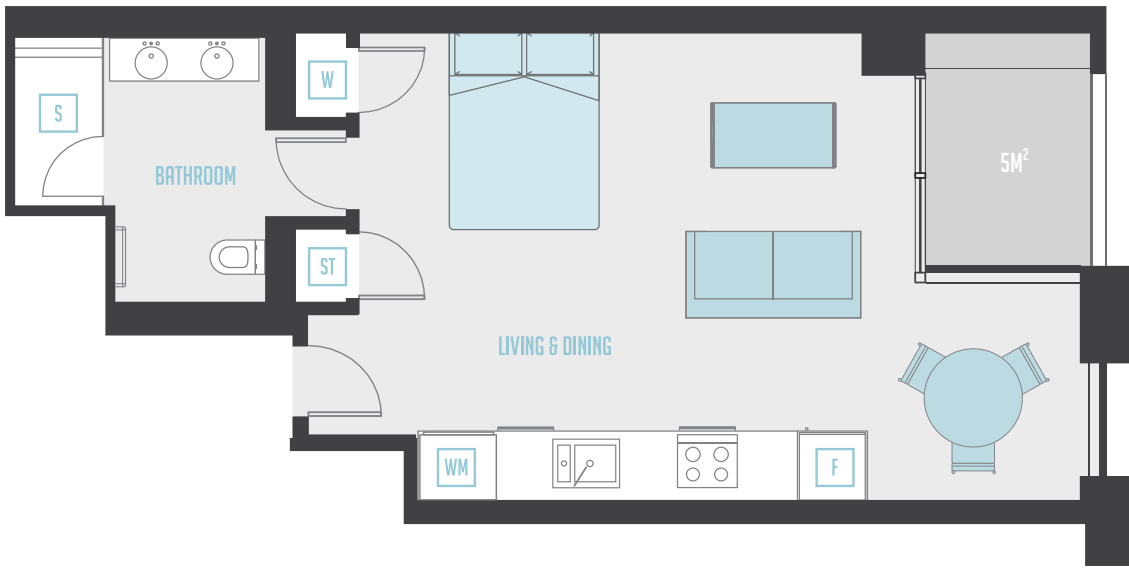
CBRE

CBRE (AGENCY) LTD LICENSED REAL ESTATE AGENT (REAA 2008)



LIBRARY 27

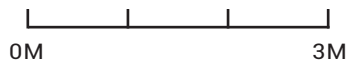
A4 / STUDIO



0800 55 73 77 / LIBRARY27.CO.NZ

- WM WASHING MACHINE
- S SHOWER
- ST STORAGE
- F FRIDGE
- W WARDROBE
- BALCONY

INTERNAL AREA 42M²
 BALCONY AREA 5M²
 TOTAL 47M²



TYPICAL LOWER LEVEL

Disclaimer: This floor plan has been prepared for marketing purposes only. All descriptions, dimensions, depictions and other details in this floor plan may not be to scale and may vary to the property as built. No third party has any authority to make or give any representation or warranty in relation to the property. Your attention is drawn to the special conditions of the contract for sale.

CBRE

CBRE (AGENCY) LTD LICENSED REAL ESTATE AGENT (REAA 2008)



LIBRARY 27

A5 / 2 BEDROOM + STUDY

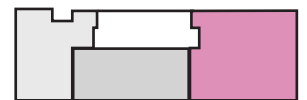


0800 55 73 77 / LIBRARY27.CO.NZ



- WM WASHING MACHINE
- S SHOWER
- ST STORAGE
- F FRIDGE
- PTY PANTRY
- W WARDROBE
- BALCONY

INTERNAL AREA 95M²
 BALCONY AREA 13M²
 TOTAL 108M²



TYPICAL UPPER LEVEL

Disclaimer: This floor plan has been prepared for marketing purposes only. All descriptions, dimensions, depictions and other details in this floor plan may not be to scale and may vary to the property as built. No third party has any authority to make or give any representation or warranty in relation to the property. Your attention is drawn to the special conditions of the contract for sale.

CBRE

CBRE (AGENCY) LTD LICENSED REAL ESTATE AGENT (REAA 2008)



LIBRARY 27

A6 / 1 BEDROOM SUB-PENTHOUSE



0800 55 73 77 / LIBRARY27.CO.NZ

- WM** WASHING MACHINE
- S** SHOWER
- ST** STORAGE
- F** FRIDGE
- W** WARDROBE
- BALCONY**

INTERNAL AREA 65M²
 BALCONY AREA 19M²
 TOTAL 84M²



LEVEL 13

Disclaimer: This floor plan has been prepared for marketing purposes only. All descriptions, dimensions, depictions and other details in this floor plan may not be to scale and may vary to the property as built. No third party has any authority to make or give any representation or warranty in relation to the property. Your attention is drawn to the special conditions of the contract for sale.

CBRE

CBRE (AGENCY) LTD LICENSED REAL ESTATE AGENT (REAA 2008)



LIBRARY 27

A7 / 2 BEDROOM SUB-PENTHOUSE

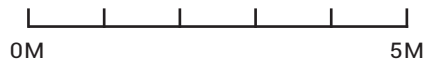


0800 55 73 77 / LIBRARY27.CO.NZ



- WM WASHING MACHINE
- S SHOWER
- ST STORAGE
- F FRIDGE
- W WARDROBE
- BALCONY

INTERNAL AREA 92M²
 BALCONY AREA 28M²
 TOTAL 120M²



LEVEL 13

Disclaimer: This floor plan has been prepared for marketing purposes only. All descriptions, dimensions, depictions and other details in this floor plan may not be to scale and may vary to the property as built. No third party has any authority to make or give any representation or warranty in relation to the property. Your attention is drawn to the special conditions of the contract for sale.

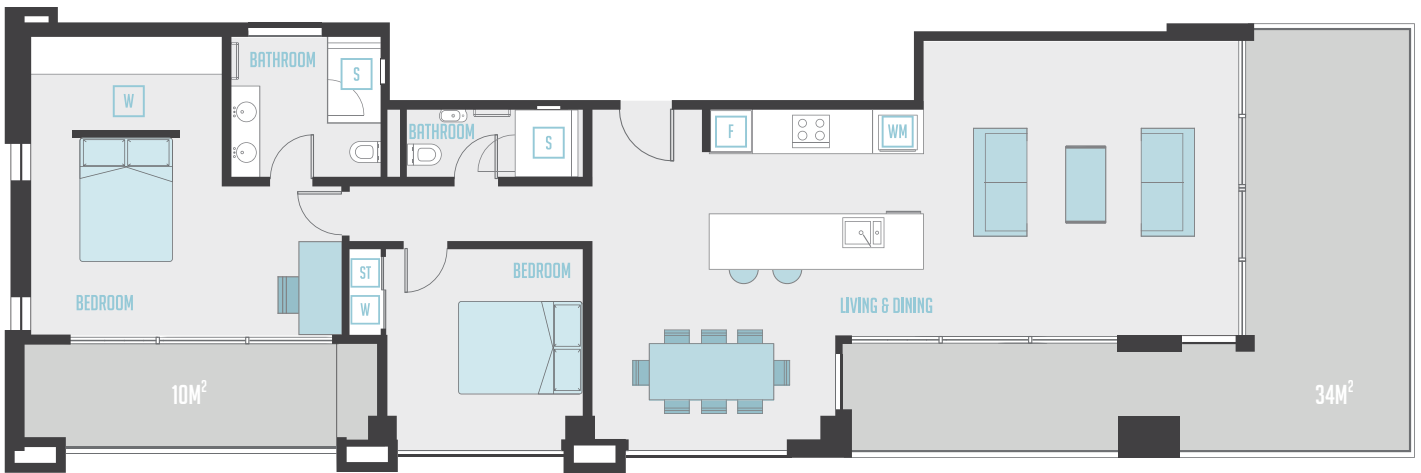
CBRE

CBRE (AGENCY) LTD LICENSED REAL ESTATE AGENT (REAA 2008)



LIBRARY 27

A8 / 2 BEDROOM SUB-PENTHOUSE

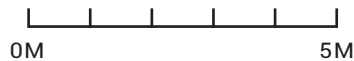


0800 55 73 77 / LIBRARY27.CO.NZ



- WM WASHING MACHINE
- S SHOWER
- ST STORAGE
- F FRIDGE
- W WARDROBE
- BALCONY

INTERNAL AREA 102M²
 BALCONY AREA 44M²
 TOTAL 146M²



LEVEL 14

Disclaimer: This floor plan has been prepared for marketing purposes only. All descriptions, dimensions, depictions and other details in this floor plan may not be to scale and may vary to the property as built. No third party has any authority to make or give any representation or warranty in relation to the property. Your attention is drawn to the special conditions of the contract for sale.

CBRE

CBRE (AGENCY) LTD LICENSED REAL ESTATE AGENT (REAA 2008)

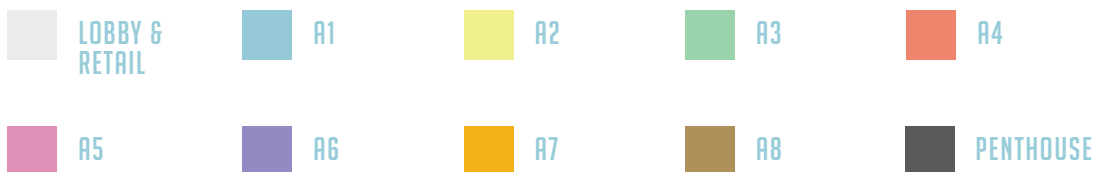


LIBRARY 27

ELEVATIONS



0800 55 73 77 / LIBRARY27.CO.NZ



Disclaimer: This floor plan has been prepared for marketing purposes only. All descriptions, dimensions, depictions and other details in this floor plan may not be to scale and may vary to the property as built. No third party has any authority to make or give any representation or warranty in relation to the property. Your attention is drawn to the special conditions of the contract for sale.

CBRE

CBRE (AGENCY) LTD LICENSED REAL ESTATE AGENT (REAA 2008)